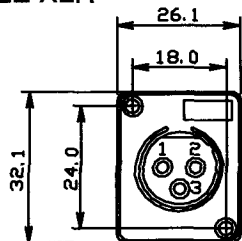
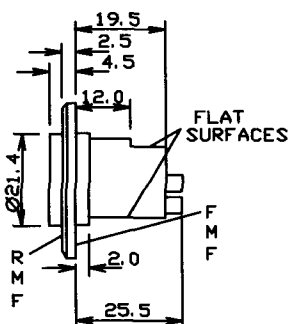


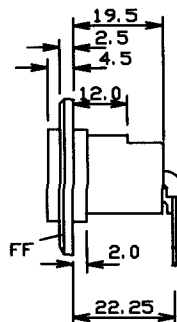
MALE XLR



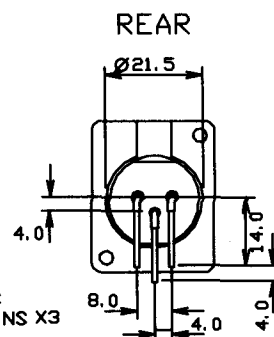
FRONT FACE



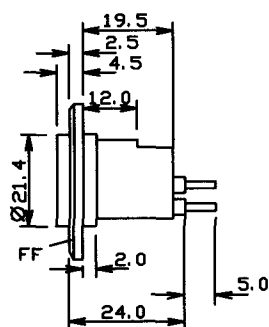
ACM



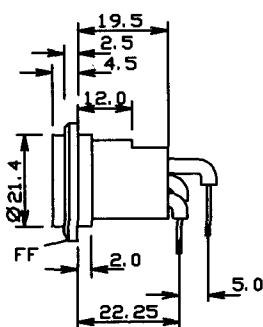
XACMPC



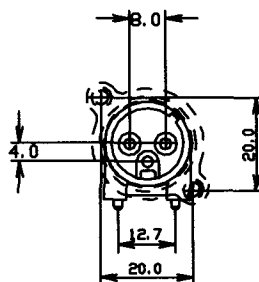
XACMPC
(REAR VIEW)



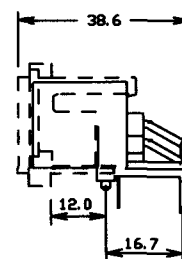
XACMPCS



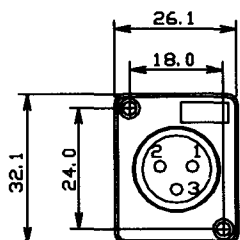
XACMR-PC
(LOW PROFILE
MODEL)



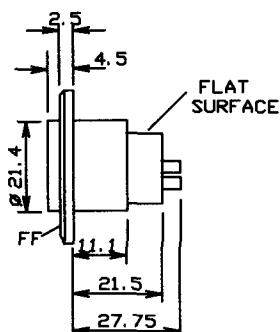
NACM-PC
(WITH OPTIONAL
ESCUTCHEON)



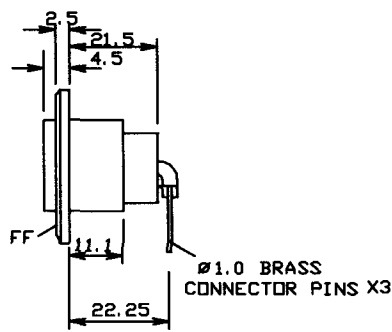
FEMALE XLR



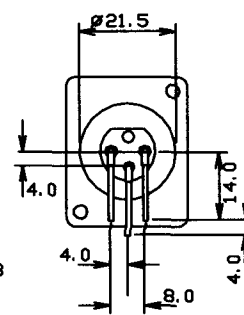
FRONT FACE



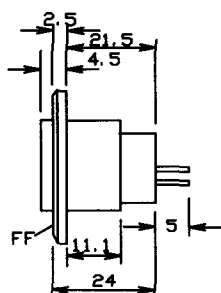
ACF



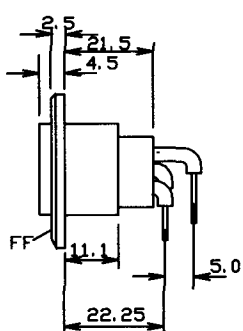
XACFPC



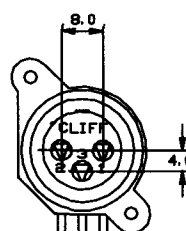
XACFPC
(REAR VIEW)



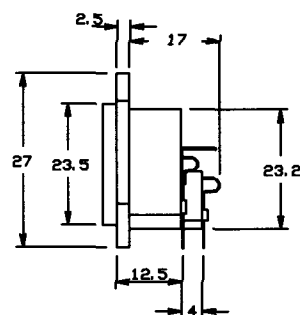
XACFPCS



XACFR-PC
(LOW PROFILE
MODEL)



NACFPC



REFER TO OFFICE FOR PC MOUNTING DETAILS.

TECHNICAL DATA

CURRENT RATING

3 pin 16 amp / 250 VAC

CONTACT RESISTANCE

Less than 3m Ω (new)

INSULATION BREAKDOWN

1600 VAC between contacts
and housing

MATERIALS

SHELL

Polyamide

PINS

Brass

CONTACT PLATING

5 μ m. silver over 5 μ m.
of nickel

CLIFF LOW NOISE METAL RANGE - SEE OVER.